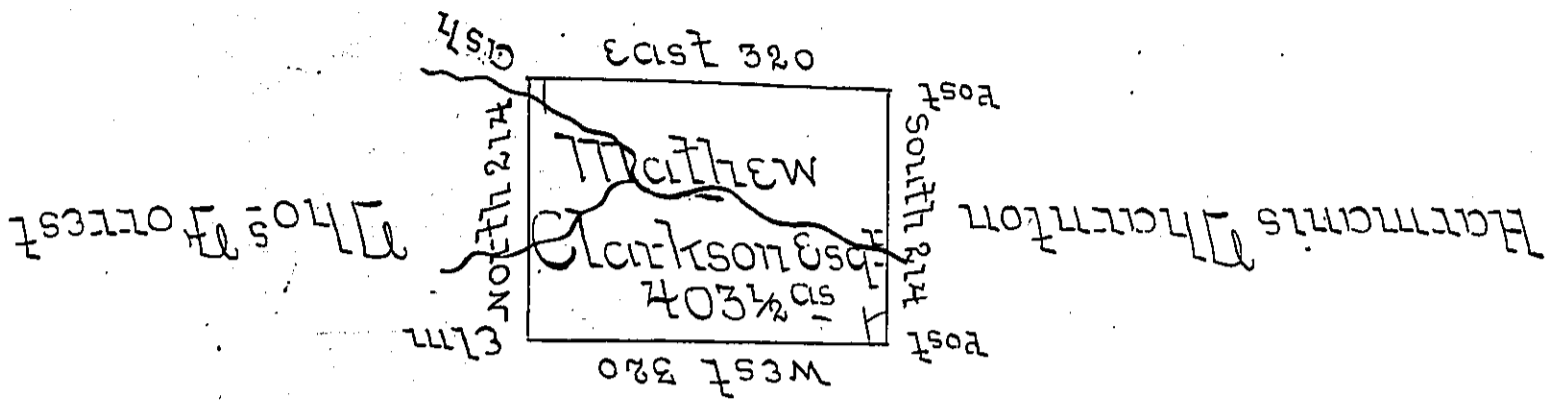


Matthew Clarkson



Matthew Clarkson

Situate on the Waters of Lake Erie in Allegheny
 County District No 1 Surveyd 11 June 1794 to
 Matthew Clarkson Esq^e on his Warrant dated
 13th April 1792 Containing Four hundred three
 Acres on half & allow^e

Thos Rees D.S.

Wm^t Brodhead Esq^e /
 Survey Gen^l)

IN TESTIMONY that the above is a copy of the original remaining on file in
 the Department of Internal Affairs of Pennsylvania, made
 conformably to an Act of Assembly approved the 16th day of
 February, 1833, I have hereunto set my Hand and caused
 the Seal of said Department to be affixed at Harrisburg,
 this sixth day of July 1904.

Joseph P. Penning
 Secretary of Internal Affairs.